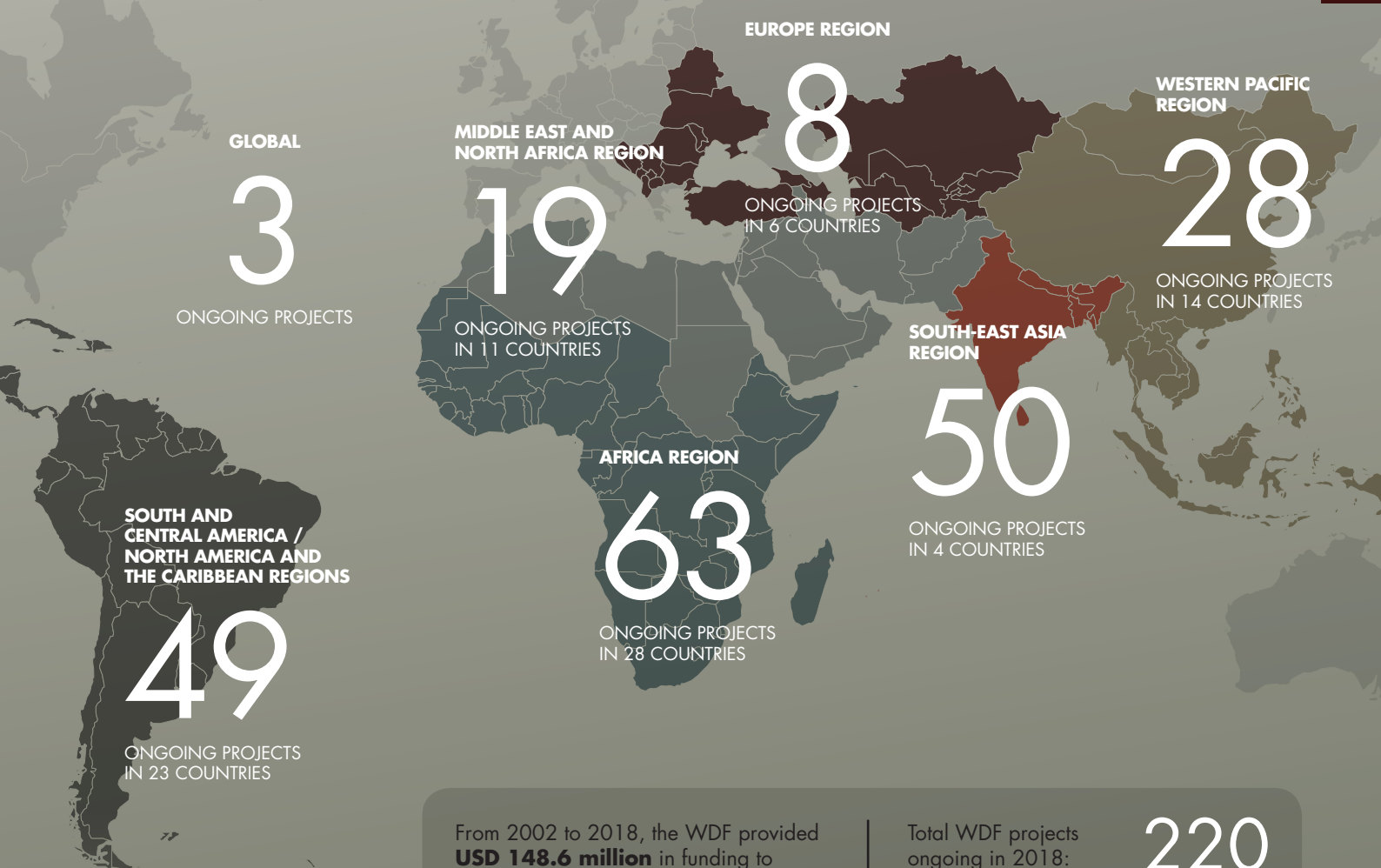


OUR IMPACT



From 2002 to 2018, the WDF provided **USD 148.6 million** in funding to **555 projects** in **116 countries**.

For every dollar spent, the Foundation raises approximately **2 dollars** in cash or as in-kind donations from other sources.

Total WDF projects ongoing in 2018: **220**

Total WDF projects completed 2002-2018: **335**

CUMULATIVE PROJECT RESULTS 2002-2018*

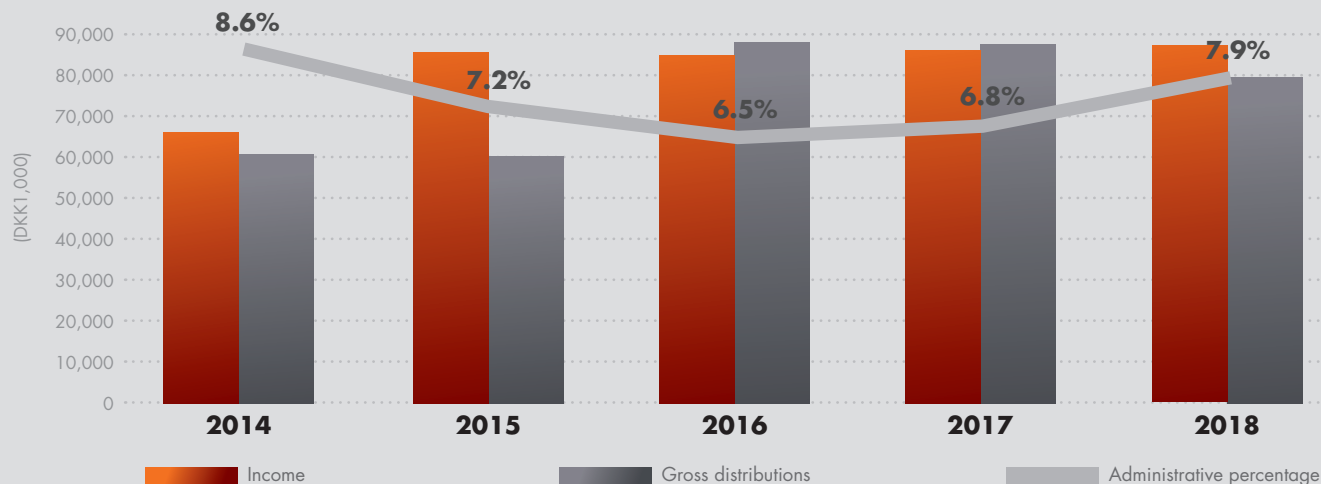
FUNDING (USD million)	WDF DISTRIBUTION TO PARTNERSHIP PROJECTS	148.6
	ADVOCACY & STRATEGIC PLATFORMS	9.3
	TOTAL WDF DISTRIBUTIONS	157.9
RESULTS		
PREVENTION	TEACHERS TRAINED	56,374
	CHILDREN AND PARENTS REACHED	2,245,693
ACCESS TO CARE	CLINICS ESTABLISHED/STRENGTHENED	13,858
	PATIENTS AT CLINICS	8,448,578
	DOCTORS TRAINED	129,868
	NURSES TRAINED	96,505
	OTHER HEALTHCARE PROVIDERS TRAINED	185,889
	AWARENESS CAMPS CONDUCTED	123,298
	PEOPLE SCREENED FOR DIABETES	11,424,701
EYE CARE	PEOPLE SCREENED FOR DIABETIC RETINOPATHY	2,412,650
	PEOPLE DETECTED WITH DIABETIC RETINOPATHY	292,983
	PEOPLE TREATED	137,476
FOOT CARE	OTHER HEALTHCARE PROVIDERS TRAINED IN FOOT CARE	32,164
	PATIENTS SCREENED FOR DIABETIC FOOT	1,309,703
PREGNANCY	CLINICS STRENGTHENED WITH HIP	4,877
	WOMEN SCREENED FOR HIP	1,062,236
TYPE 1 DIABETES	CHILDREN WHO RECEIVED CARE	19,860
TUBERCULOSIS & DIABETES	OTHER HEALTHCARE PROVIDERS TRAINED IN TB/DIABETES	21,350
	CLINICS STRENGTHENED	661
	PEOPLE WITH TUBERCULOSIS SCREENED FOR DIABETES	77,384

*Results are based on internal reporting to WDF.

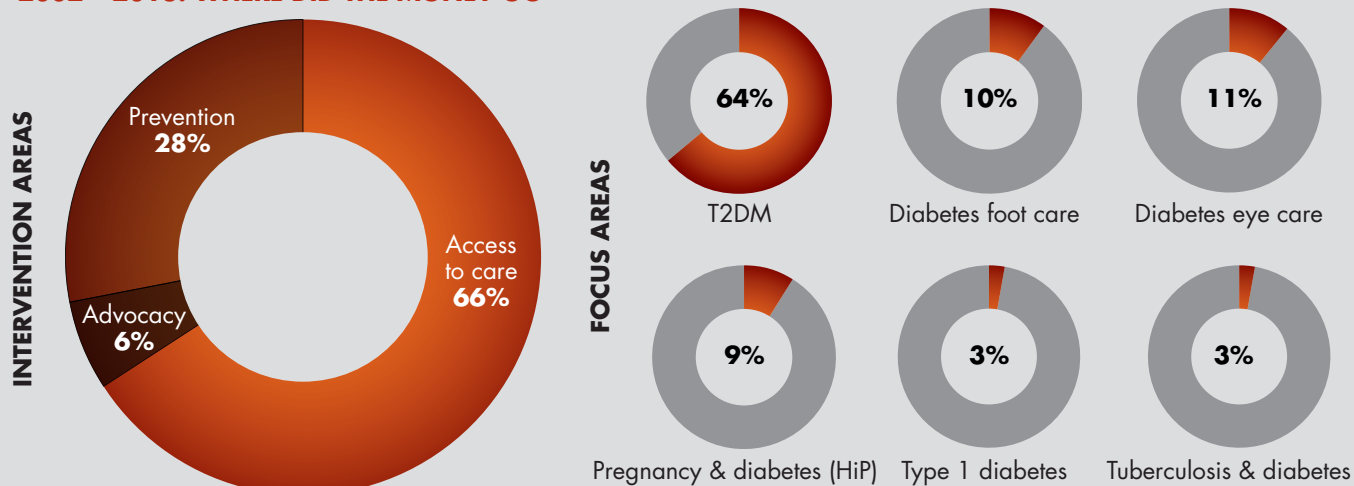
KEY FIGURES

The WDF is registered as an independent trust and governed by a Board of experts in the field of diabetes, access to health and development assistance. Annual distributions reflect the focus of project proposals received that year. For a cumulative look at distributions to focus areas and regions, visit worlddiabetesfoundation.org

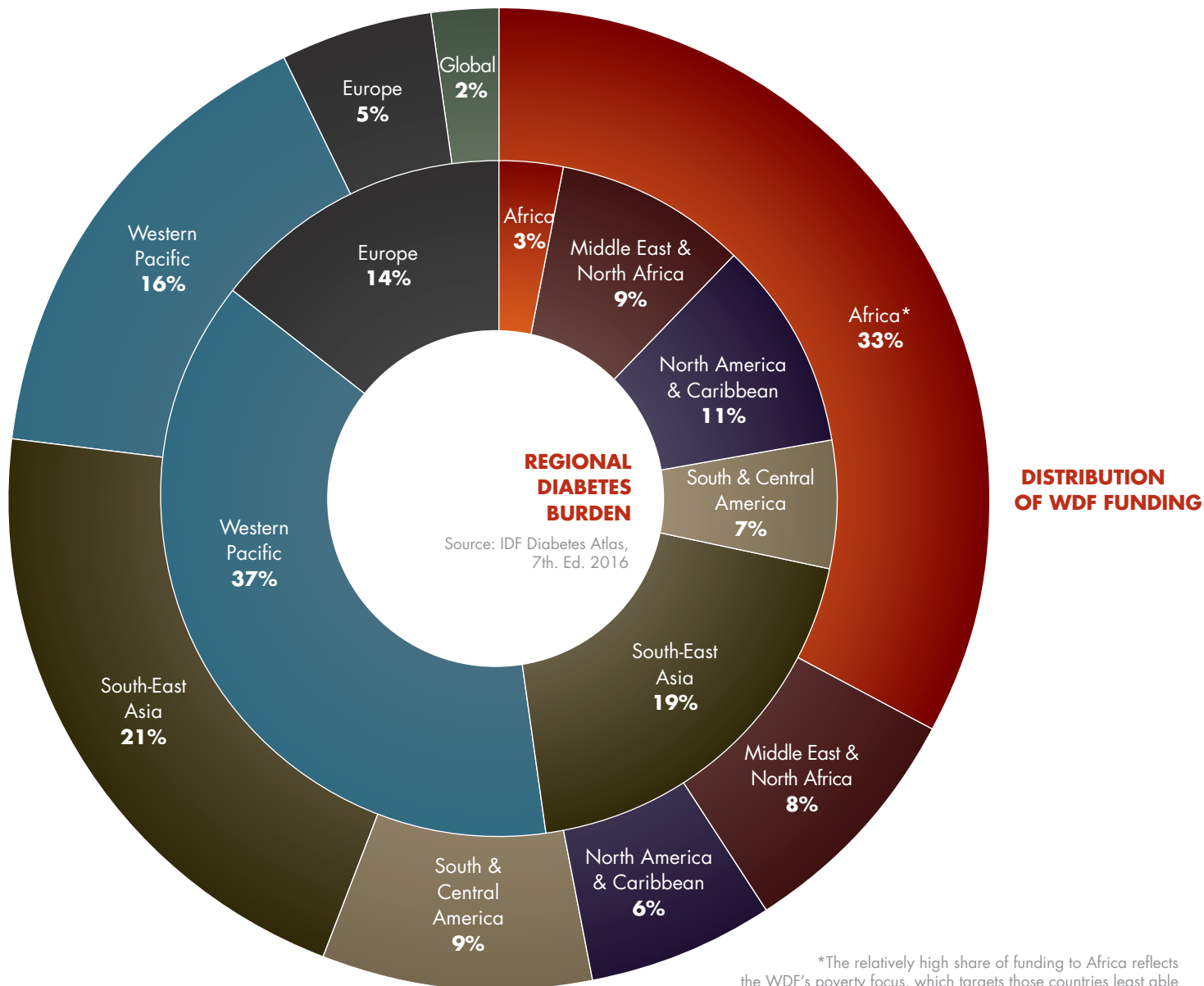
2014 – 2018: INCOME, DISTRIBUTIONS AND ADMINISTRATIVE EXPENSES PERCENTAGE



2002 – 2018: WHERE DID THE MONEY GO



2002 – 2018: WHERE DID THE MONEY GO – REGIONS



*The relatively high share of funding to Africa reflects the WDF's poverty focus, which targets those countries least able to withstand the burden of diabetes and its complications.



WORLD **DIABETES** FOUNDATION

Krogshøjvej 30A · DK-2880 Bagsværd · Denmark · Phone +45 30 79 80 00 · www.worlddiabetesfoundation.org